

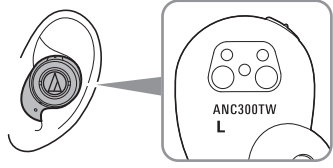


audio-technica

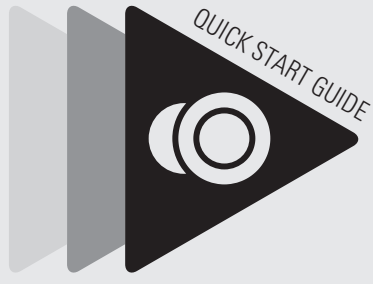
Check



- Headphones
- Charging case
- Eartips (XS, S, M, L)
- COMPLY™ Foam eartips (M)
- USB charging cable
- Quick start guide (this leaflet)
- Caution guide

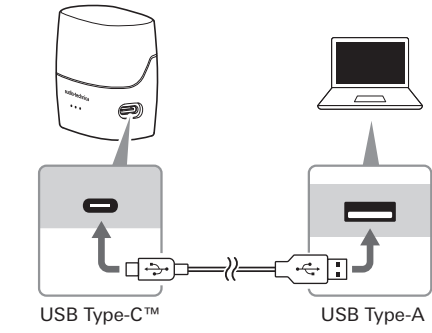


ATH-ANC300TW



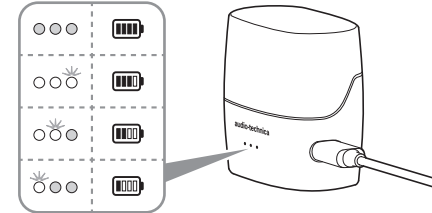
Charge

Charging case

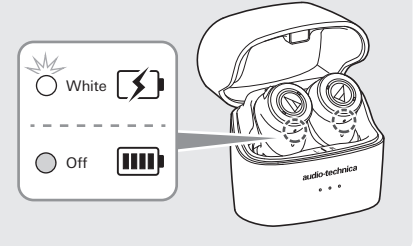
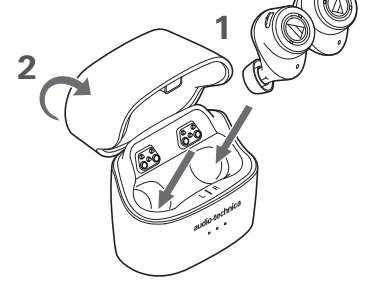


USB Type-C™

USB Type-A

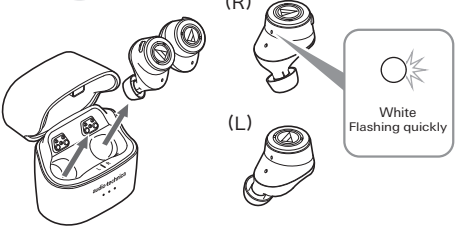


Headphones

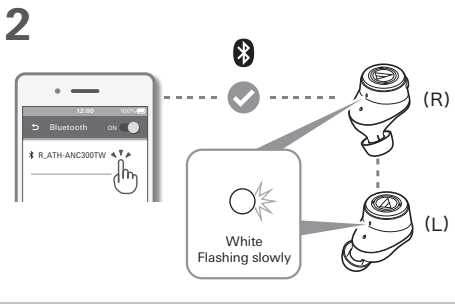
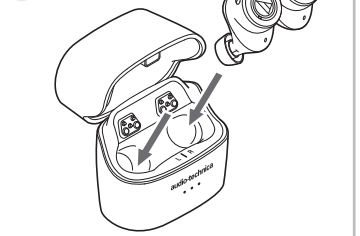


Pairing

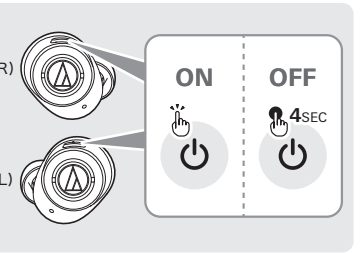
1 ON



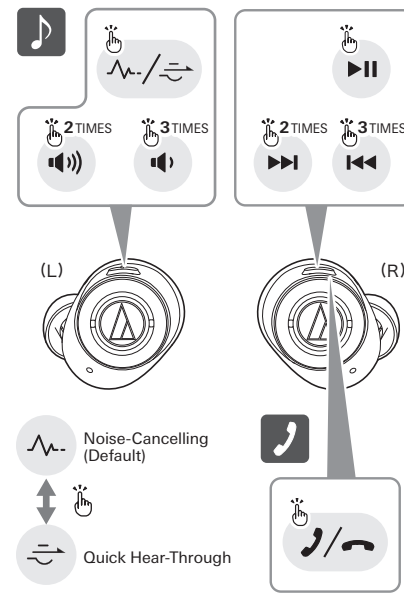
OFF



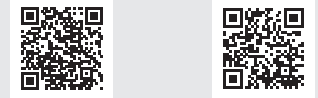
Or



Music / Phone



Support



For more information on how to use this product and troubleshoot any problems, refer to the user manual on the Audio-Technica website.

www.audio-technica.com

To more conveniently use the product, use our app for smartphones.



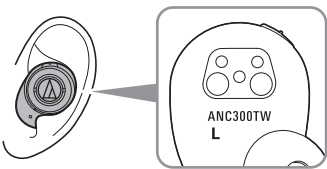
The Bluetooth® word mark and logos are registered trademarks owned by Bluetooth SIG, Inc. and any use of such marks by Audio-Technica Corporation is under license. Other trademarks and trade names are those of their respective owners. Apple and the Apple logo are trademarks of Apple Inc., registered in the U.S. and other countries. App Store is a service mark of Apple Inc. Google Play and the Google Play logo are trademarks of Google LLC. USB type-C™ is a trademark of USB Implementers Forum. Audio-Technica Corporation 2-46-1 Nishi-naruse, Machida, Tokyo 194-8666, Japan www.audio-technica.co.jp ©2019 Audio-Technica Corporation 132901260-01-01 ver.1 2019.12.15

Français / Deutsch / Italiano

Contrôle / Kontrolle / Controllo

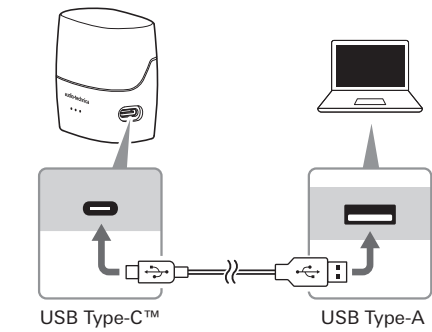


- Écouteurs / Kopfhörer / Cuffie
- Étui chargeur / Ladegehäuse / Alloggiamento per la ricarica
- Embout (TP, P, M, G) / Kopfhöreraufsätze (XS, S, M, L) / Copriauricolari (XS, S, M, L)
- Embouts (M) en mousse COMPLY™ / COMPLY™ Schaumauufsätze (M) / Copriauricolari in schiuma COMPLY™ (M)
- Câble de recharge USB / USB-Ladekabel / Cavo per la carica USB
- Guide de prise en main (ce dépliant) / Kurzanleitung (dieser Handzettel) / Guida rapida (questo opuscolo)
- Guide de mise en garde / Sicherheitsanweisungen / Guida precauzionale



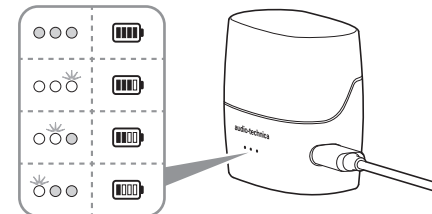
Charge / Laden / Carica

Étui chargeur / Ladegehäuse / Alloggiamento per la ricarica

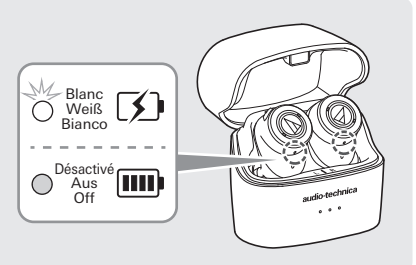
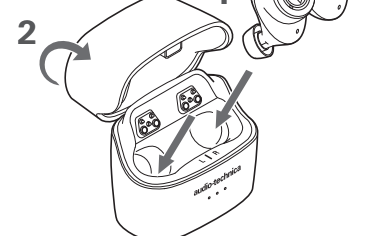


USB Type-C™

USB Type-A

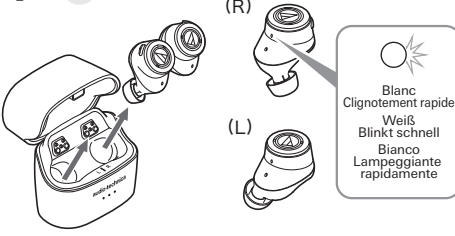


Écouteurs / Kopfhörer / Cuffie

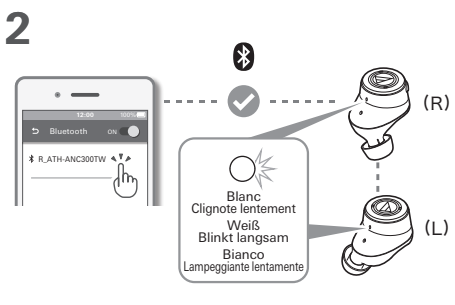
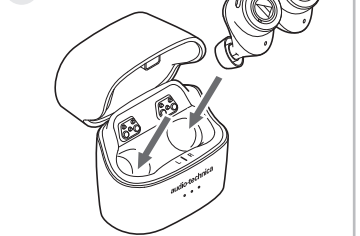


Appairage / Paarung / Associazione

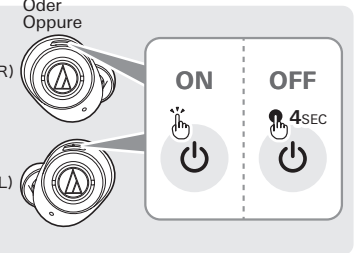
1 ON



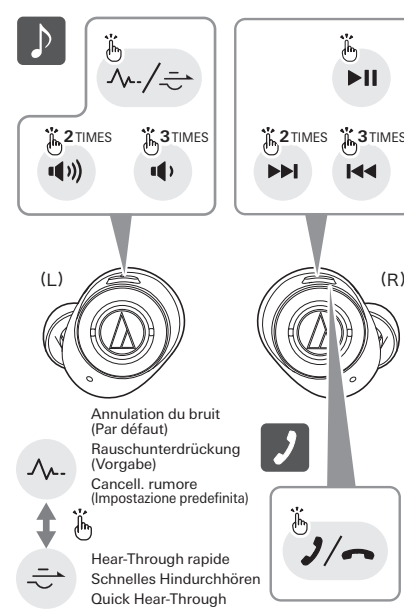
OFF



Ou / Oder / Oppure



Musique/Téléphone / Musik/Handy / Musica/Telefono



Support / Unterstützung / Assistenza

Pour plus d'informations sur l'utilisation de ce produit et la résolution des problèmes, reportez-vous au manuel de l'utilisateur sur le site Web d'Audio-Technica.

Weitere Informationen zum Gebrauch dieses Produkts und zur Behebung eventueller Probleme entnehmen Sie bitte der Bedienungsanleitung auf der Website von Audio-Technica.

Per maggiori informazioni sull'utilizzo del presente prodotto e per la risoluzione di eventuali problemi, fare riferimento al manuale dell'utente sul sito Audio-Technica.



Pour piloter le produit plus aisément, utilisez notre application pour smartphones.

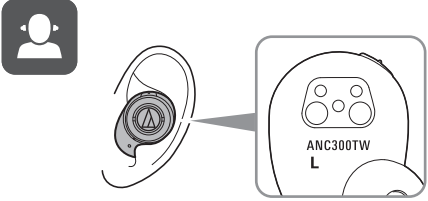
Für eine bequemere Bedienung des Produkts nutzen Sie unsere App für Smartphones.

Per un miglior controllo del prodotto, utilizzare la app per smartphone dedicata.



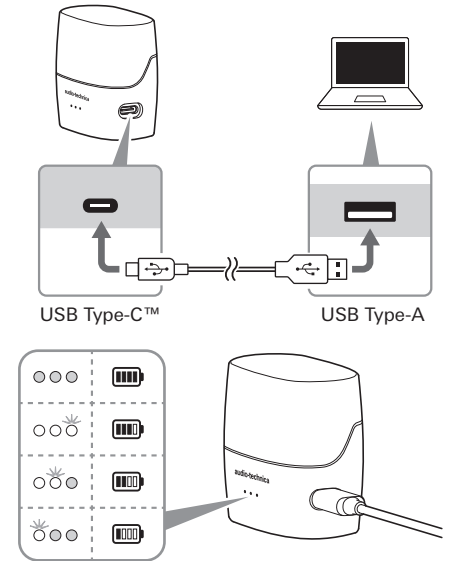
✓ Comprobar / Conteúdo da embalagem / Проверка

- Auriculares / Fones de ouvido / Наушники
- Estuche de carga / Estojo de carregamento / Чехол-аккумулятор
- Puntas de audífono (XS, S, M, L) / Ponteiros (PP, P, M, G) / Насадки (размеры XS, S, M, L)
- Puntas de audífono de espuma COMPLY™ (M) / Ponteiros de espuma COMPLY™ (M) / Пенные насадки COMPLY™ (размер M)
- Cable de carga USB / Cabo de carga USB / USB-кабель для зарядки
- Guía de inicio rápido (este folleto) / Guia rápido (este folheto) / Краткое руководство пользователя (этот листок)
- Guía de precauciones / Guia de precauções de segurança / Руководство по мерам предосторожности

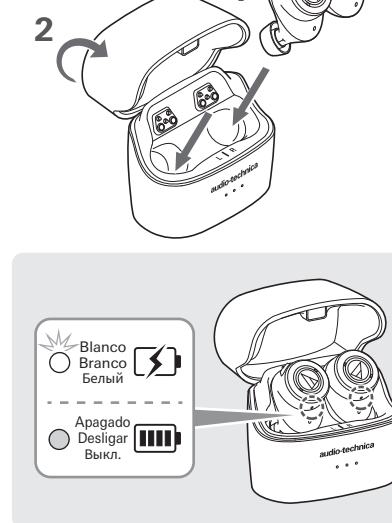


⚡ Carga / Carregar / Заряд

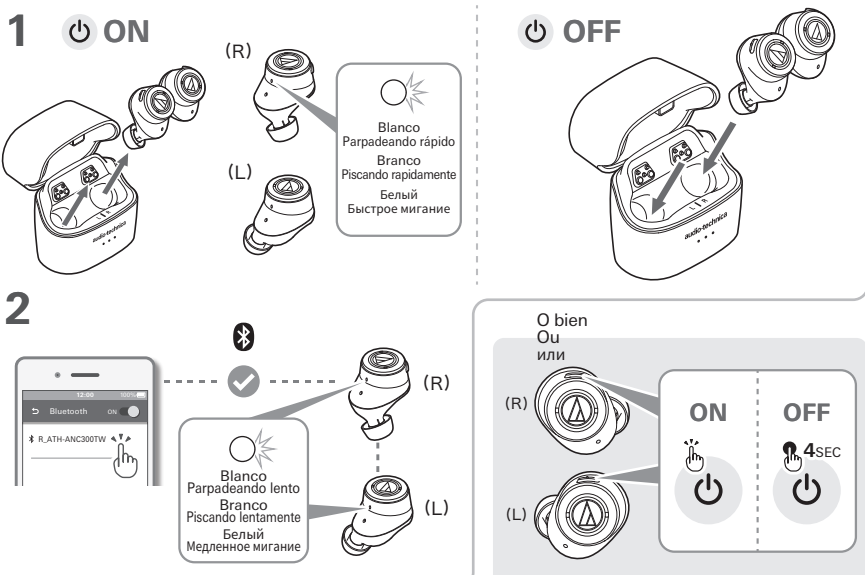
Estuche de carga / Estojo de carregamento / Чехол-аккумулятор



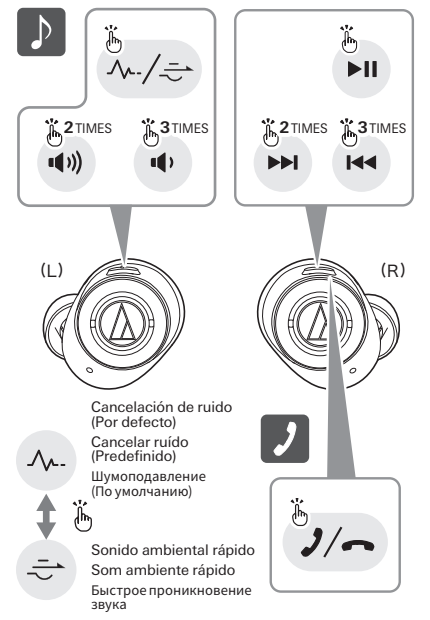
Auriculares
Fones de ouvido
Наушники



📶 Emparejamiento / Emparelhamento / Сопряжение



🎵 Música/Teléfono / Música/Telefone / Музыка/Телефон



📖 Asistencia / Suporte / Техническая поддержка

Para más información sobre el uso de este producto y la resolución de problemas, consulte el manual de usuario en el sitio web de Audio-Technica.

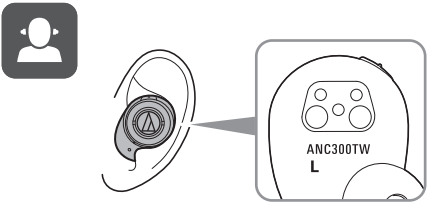
Para obter mais informações sobre como usar este produto e solucionar qualquer problema, consulte o manual do usuário no site da Audio-Technica.

Для получения дополнительной информации о том, как использовать этот продукт и устранять любые неисправности, обратитесь к руководству пользователя на веб-сайте Audio-Technica.

www.audio-technica.com

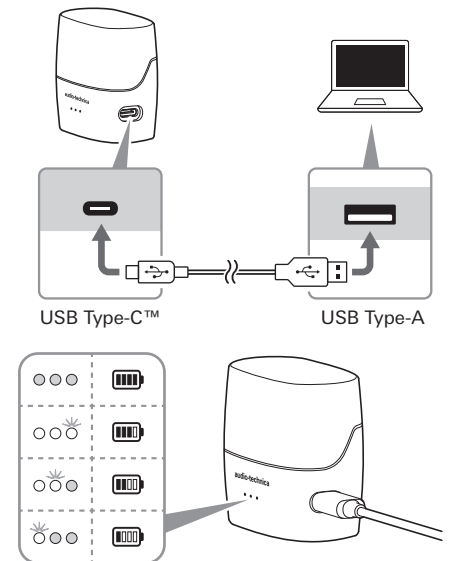
✓ 检查 / 検査 / 확인

- 耳机 / 耳機 / 이어폰
- 充电盒 / 充電盒 / 충전 케이스
- 耳套 (XS, S, M, L) / 耳塞 (XS·S·M·L) / 이어팁(XS, S, M, L)
- COMPLY™泡沫耳套 (M) / COMPLY™泡棉耳塞 (M) / COMPLY™ Foam 이어팁(M)
- USB充电线 / USB充電線 / USB 충전 케이블
- 快速入门指南 (本说明书) / 快速入門指南 (本手冊) / 빠른 시작 가이드(본 소책자)
- 注意事项指南 / 注意事項 / 주의사항 안내

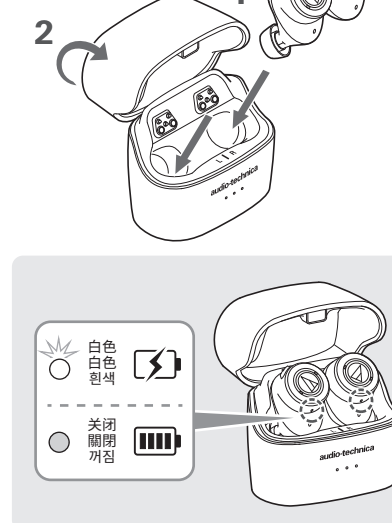


⚡ 充电 / 充電 / 충전

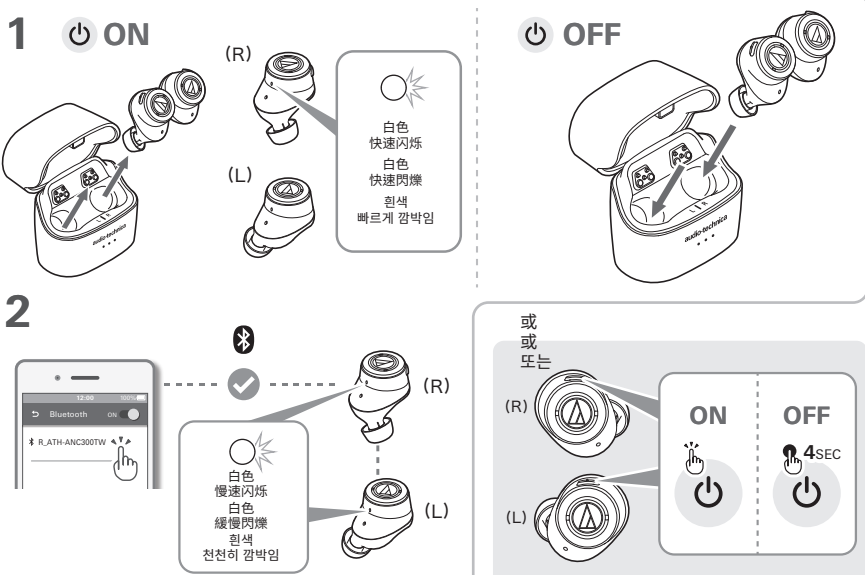
充电盒 / 充電盒 / 충전 케이스



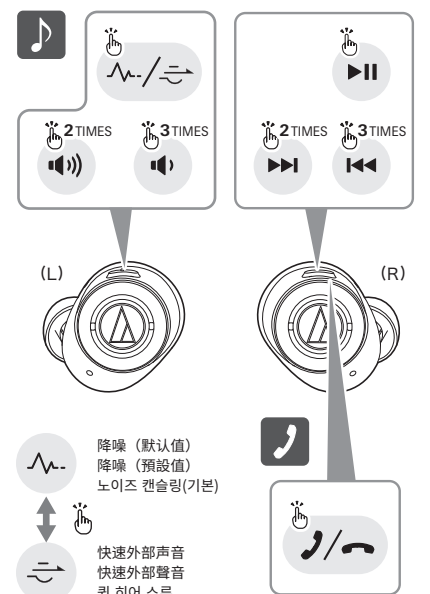
耳机
耳機
이어폰



📶 配对 / 配對 / 페어링(연결)



🎵 音乐/电话 / 音樂/電話 / 음악/전화



📖 支持信息 / 支援資訊 / 지원

关于如何使用本产品以及解决各种问题的详细信息，请参阅“铁三角”网站上的用户手册。

有關本產品的使用方法以及各種問題的故障排除方法，請參閱「鐵三角」網站上的使用說明書。

본 제품의 사용법 및 문제 해결에 관한 자세한 사항은 Audio-Technica 웹사이트의 사용자 설명서를 참조하십시오.

www.audio-technica.com