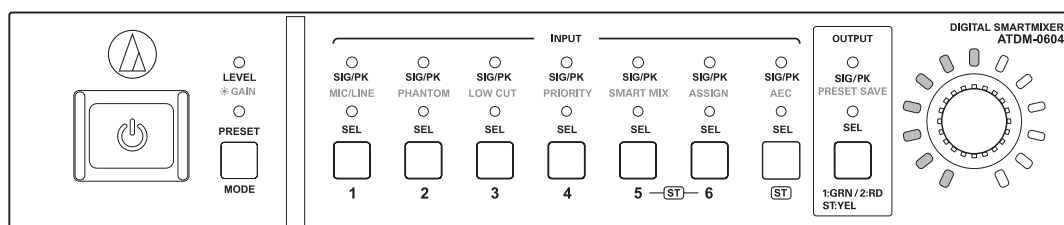


# ATDM-0604

## User Manual Web Remote Manager

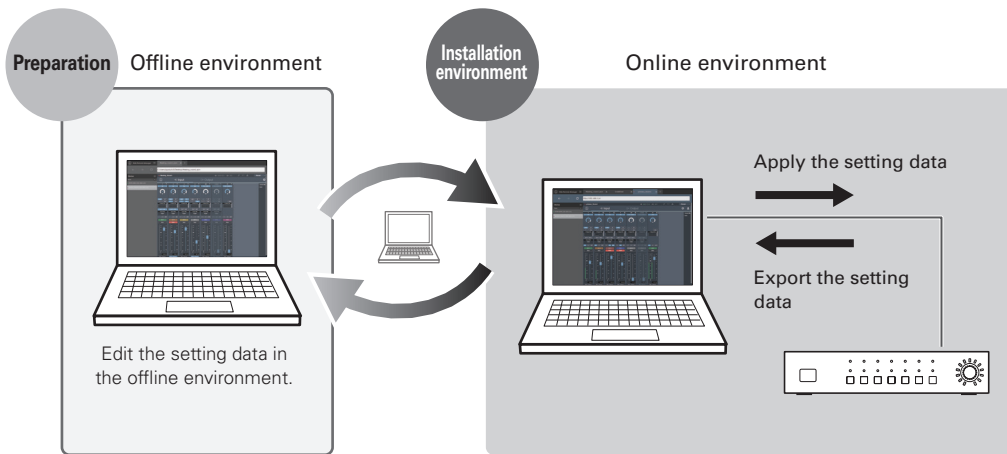


# Web Remote Manager

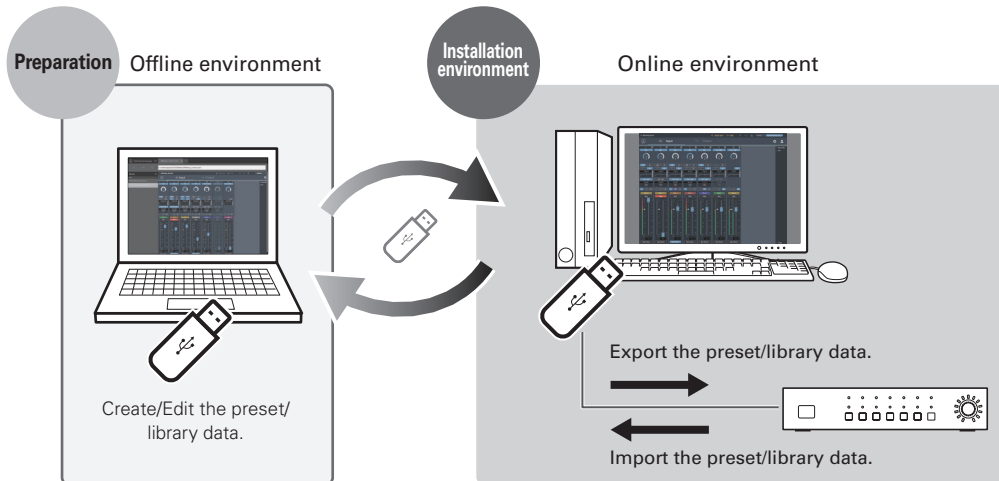
## What is Web Remote Manager?

- This is an application used to apply the web remote settings to an offline environment.
- The setting data edited using this application can be saved as a file. The file that has been saved can be recalled to edit the setting data at a later time.
- A device is detected when it is connected to the same network. The setting file created in advance in an offline environment can be recalled to apply the setting data to the detected device.
- When using this application, also read the user manual supplied with the device.

### Sample use case 1



### Sample use case 2



---

# Web Remote Manager

---

## Recommended environment

This application is for PCs. It is not compatible with tablets or smartphones.

## Operating systems required to run Web Remote Manager

---

- Microsoft Windows 7 or later
- Apple OS X 10.11 El Capitan or later

## Recommended web browsers for Web Remote

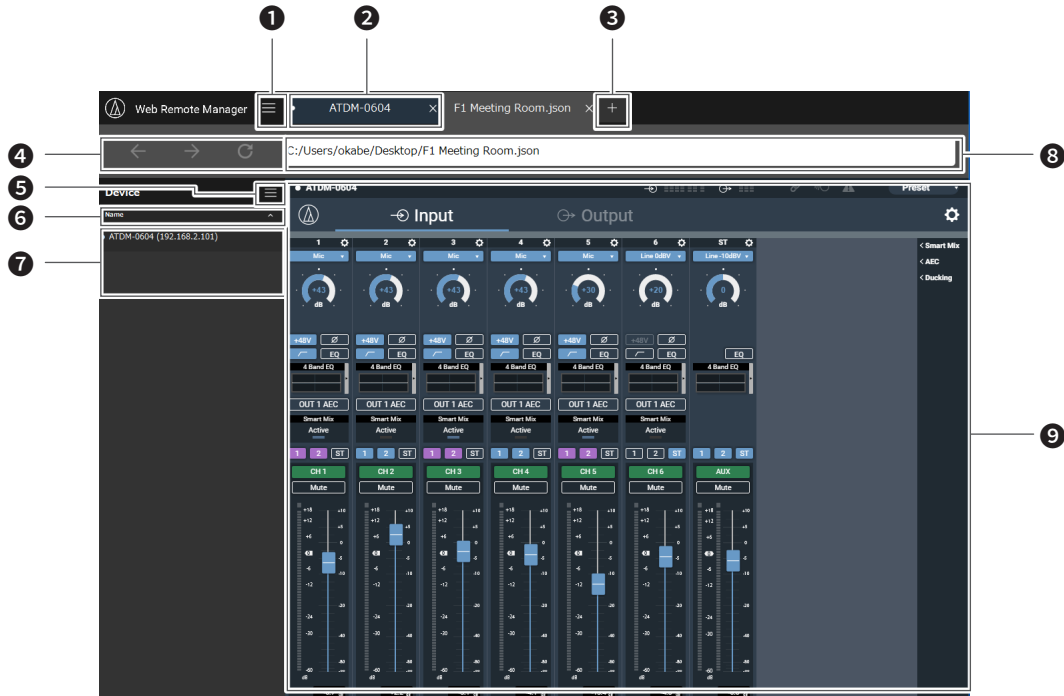
---



- Microsoft Internet Explorer 11 (Windows)
- Google Chrome ver.56 or later (Windows)
- Mozilla Firefox ver.52 or later (Windows)
- Safari 10 or later (OS X)

## Installing Web Remote Manager

1. **Download the Web Remote Manager installer to the device.**
  - Download it from the Audio-Technica website ([www.audio-technica.com](http://www.audio-technica.com)) for your country or region.
2. **Double-click "setup.exe" you have downloaded.**
  - The Setup Wizard opens.
3. **Follow the on-screen instructions to install Web Remote Manager.**
  - When installation is complete, the "Web Remote Manager" icon appears on the desktop.

# How to view the Web Remote Manager screen



- 1 Click to display the Main Menu.
- 2 The setting file being edited appears in tab format.
  - Offline edit tab: The file names appear. A new tab is displayed as “Undefined”.
  - Online edit tab: The names of the devices set using Web Remote appear.
- 3 Click to add a new tab.
- 4 Click for “Back”, “Next”, and “Reload” while editing a file online.
- 5 Click to display the list of devices.
- 6 The detected devices on the list can be sorted.
  - Click the text to sort the device list by “Name”, “IP address”, or “Model” in that order.
  - Click  /  to sort the device list by ascending/descending order.
- 7 A list of detected devices appears.
- 8 An address appears.
  - Offline edit tab: This is the location where the setting file currently open is saved.
  - Online edit tab: An IP address appears.
- 9 A browser screen appears.
  - Offline edit tab: The Web Remote screen (with limited functions) appears.
  - Online edit tab: The Web Remote screen appears.

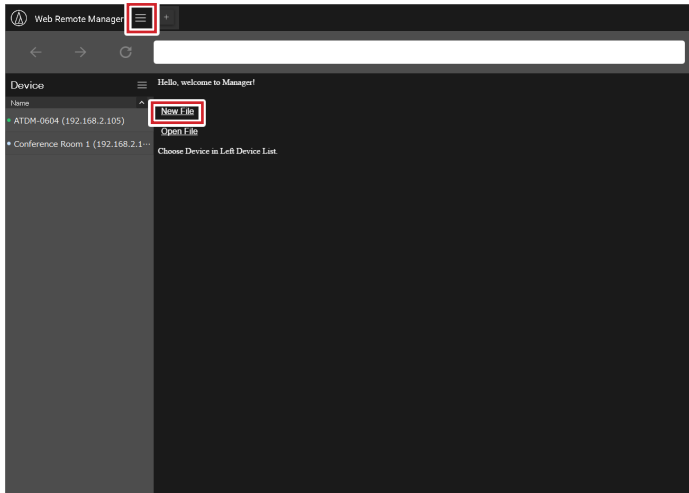
# Using Web Remote Manager

## Using Web Remote Manager offline

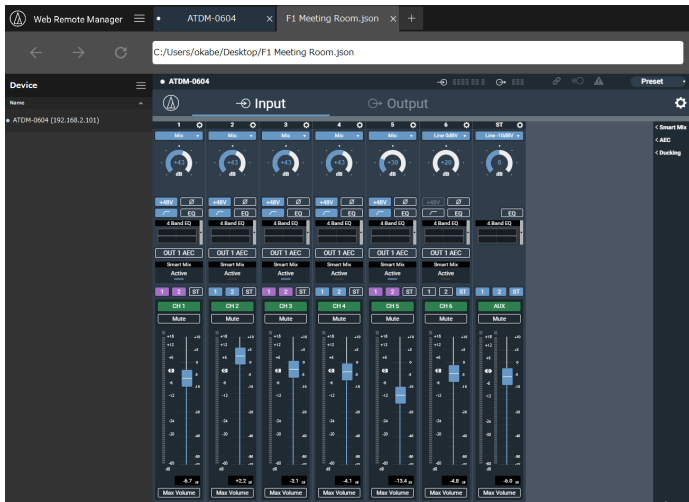
When using Web Remote Manager in an offline environment, the setting screen is basically the same as the Web Remote screen, except for some functions that are restricted or changed. For the restricted or changed functions, refer to "Restrictions/Changes for Offline Use" (p.6).

### 1. Click "New File" to create a new file.

- You can also click "☰" and then "New File" to create a new file.
- Click "Open File" or click "☰" and then "Open File" to open and edit a file saved to the PC.



### 2. Edit the setting data for each item.



### 3. After all settings have been specified, click "☰" and then "Save As..." / "Save".

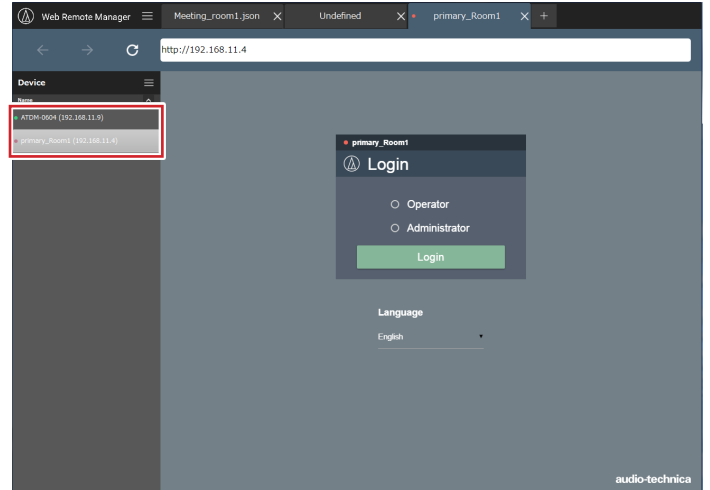
- The setting file is saved to the PC.

## Using Web Remote Manager online

If a device is connected to the network, you can operate the device with this application via Web Remote.

### 1. The devices that are detected on the same network appear on the left side of the screen. Double-click on the target device.

- Web Remote launches, and the Login screen appears.



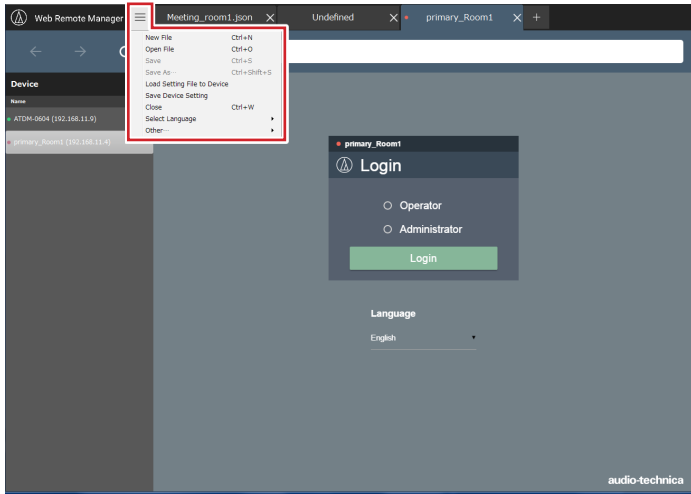
### 2. Edit each item, or perform procedures.

- Web Remote can be used in the same manner as the regular Web Remote. Read the user manuals for the devices being used also.



# Using Web Remote Manager

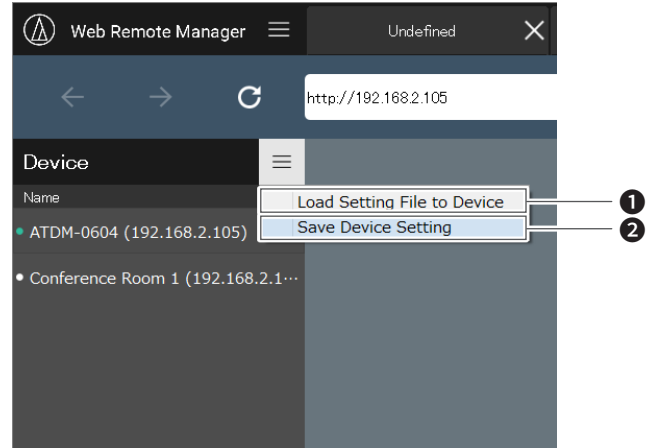
## Operations available on the main menu



New File	Add a new tab, and edit a new file.
Open File	Open a setting file saved on the PC.
Save	When editing the setting file offline, overwrite and save the setting file.
Save As...	When editing the setting file offline, save the setting file with a new name.
Load Setting File to Device	Communicate with the device selected on the device list, and import and apply the setting file that has been saved to the PC.
Save Device Setting	Communicate with the device selected on the device list, and save the setting file to the PC.
Close	Close the tab currently open.
Select Language	Select the display language. <ul style="list-style-type: none"> <li>• The application starts in the language selected here when it is opened subsequently.</li> <li>• When the setting file is applied to the device, the language selected is also applied to the Web Remote screen language.</li> </ul>
Other...	<ul style="list-style-type: none"> <li>• "Delete Cookie": Delete a cookie.</li> <li>• "About this Application": You can view the version of this application.</li> </ul>

## Operations available on the device list menu screen

When a device is connected to the network, the setting file that was created in advance offline and saved to the PC can be imported and applied to the device. The setting file of the device that is connected can also be recalled and saved to the PC.

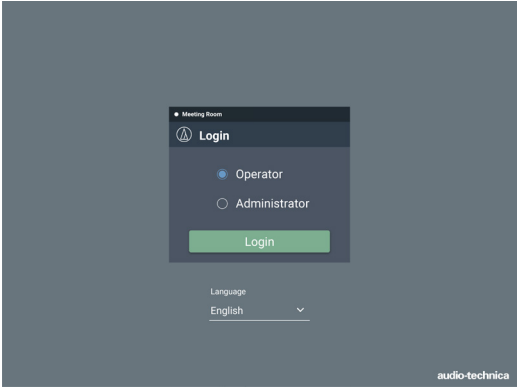

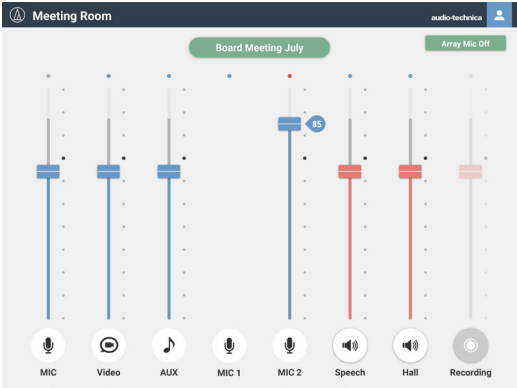


- 1 Communicate with the device selected on the device list, and import and apply the setting file that has been saved to the PC.
- 2 Communicate with the device selected on the device list, and save the setting file to the PC.

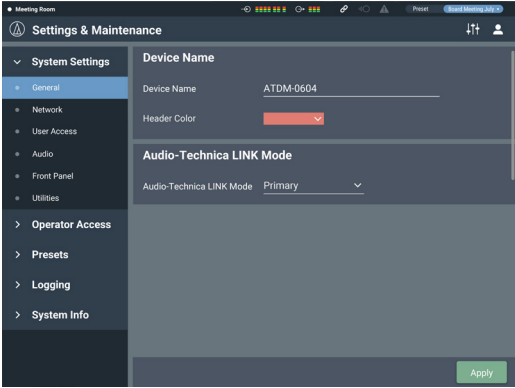
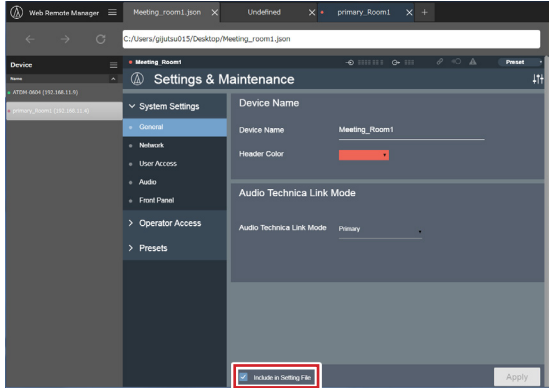
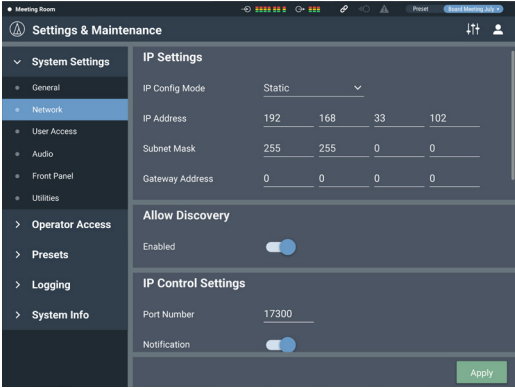
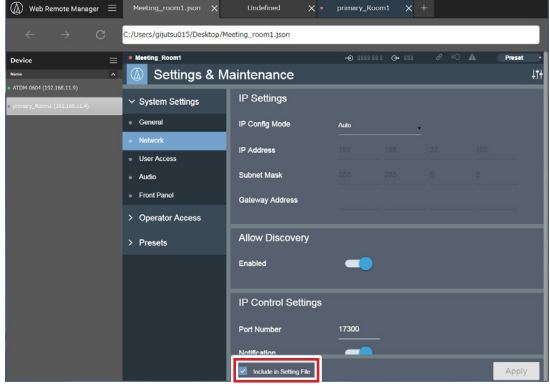
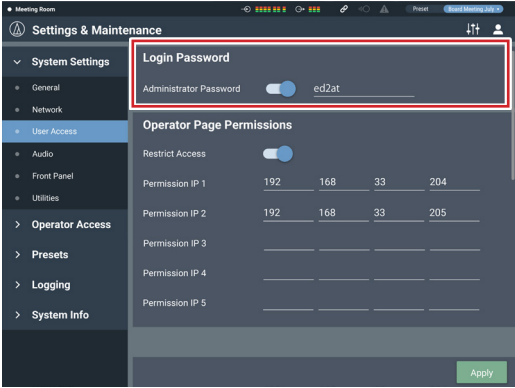
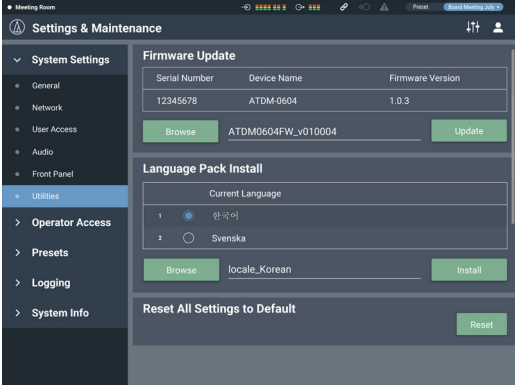
• If an administrator password is set for the selected device, a password entry screen appears.

## Restrictions/Changes for offline use

When using Web Remote Manager in an offline environment, the setting screen is basically the same as the Web Remote screen, except for some functions that are restricted or changed. Make sure to read the following.

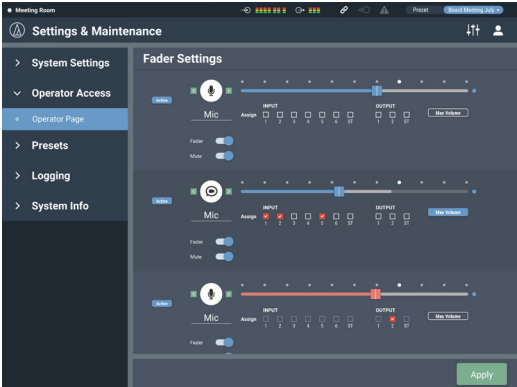
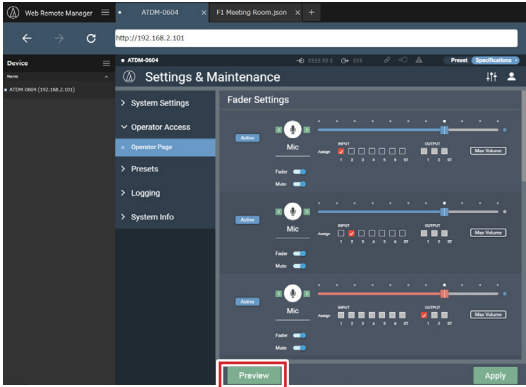

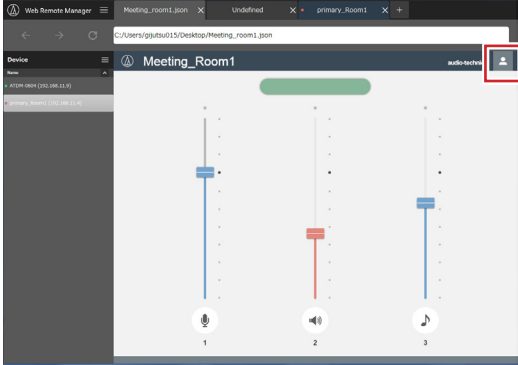
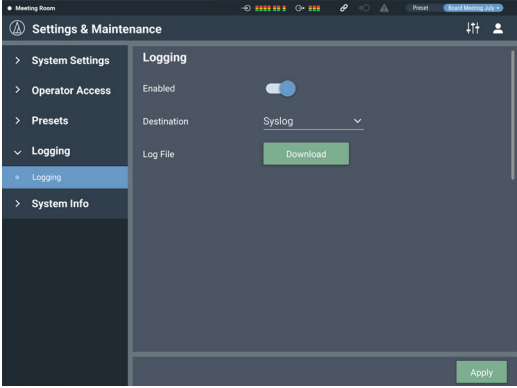
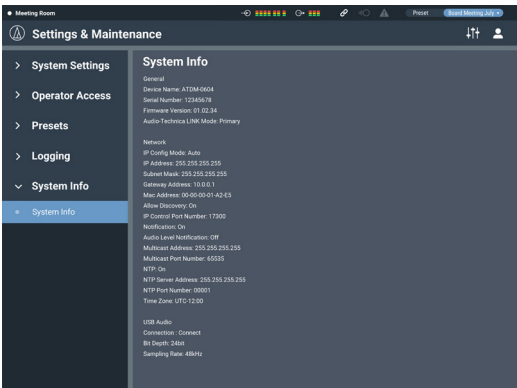
Online	Offline
 <p data-bbox="379 730 491 757">Login screen</p>	<p data-bbox="810 383 1107 409">The Login screen does not appear.</p>
 <p data-bbox="236 1178 638 1205">Indicator, Status icon, Input/Output level meters</p>	<p data-bbox="810 831 1062 857">These functions are disabled.</p>
 <p data-bbox="379 1626 491 1653">Operator screen</p>	<p data-bbox="810 1279 1426 1328">You can view a preview of the Operator screen by selecting "Settings &amp; Maintenance" &gt; "Operator Access" &gt; "Operator Page" (p.8).</p>
 <p data-bbox="379 2074 491 2101">Logout icon</p>	<p data-bbox="810 1727 1098 1753">The Logout icon does not appear.</p>

# Restrictions/Changes for offline use

Online	Offline
 <p>Setting &amp; Maintenance &gt; System Settings &gt; General</p>	 <p>A check box for "Include in Setting File" is added. Select this option to apply the settings specified under "General" when importing the setting file.</p>
 <p>Setting &amp; Maintenance &gt; System Settings &gt; Network</p>	 <p>A check box for "Include in Setting File" is added. Select this option to apply the settings specified under "Network" when importing the setting file.</p>
 <p>Setting &amp; Maintenance &gt; System Settings &gt; User Access</p>	<p>There is no "Login Password".</p>
 <p>Setting &amp; Maintenance &gt; System Settings &gt; Utility</p>	<p>The Utility screen does not appear.</p>



# Restrictions/Changes for offline use

Online	Offline
 <p>Setting &amp; Maintenance &gt; Operator Access &gt; Operator Page</p>	 <p>A function to preview the Operator Page is added. Click to display the Operator Page.</p> <p style="text-align: center;">  </p>
 <p>Click the area in the red box on the Operator Page to return to the previous screen.</p>	 <p>Setting &amp; Maintenance &gt; Logging &gt; Logging</p>
 <p>Setting &amp; Maintenance &gt; System Info &gt; System Info</p>	<p>The Log Settings screen does not appear.</p> <p>The System Info screen does not appear.</p>

